



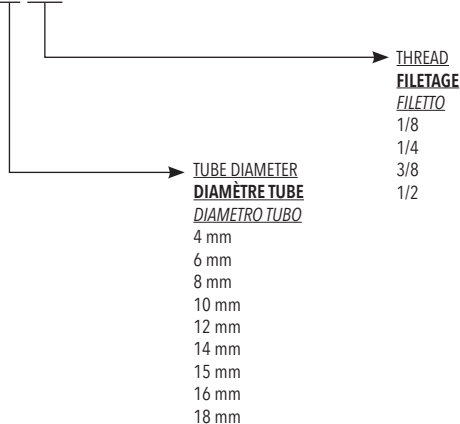
Compression fittings are so defined because the tube closing on the fitting is made by a cutting compression ogive which holds on the tube.
Compression fittings are suitable for the assembly of rigid tubes (copper, brass, ...); for possible use of "plastic" tubes a special stiffener (cod. D414) is necessary to be inserted in the tube until the suitable support. All fittings belonging to this category have been planned according to DIN rules which control the product.

Le raccord de compression est ainsi défini car le serrage du tuyau sur le raccord se fait au moyen de la compression d'une olive qui va s'accrocher au tuyau lui-même.
Le raccord de compression est adapté dans l'assemblage de tubes rigides (cuivre, laiton, etc.); mais l'utilisation de tubes "plastique" est possible, utilisez une fourrure (code D414) qui sera insérée dans le tuyau jusqu'à ce que le sertissage soit garanti. Tous les accessoires de la gamme sont conçus selon les normes DIN.

I raccordi a compressione vengono così definiti in quanto il serraggio del tubo sul raccordo avviene mediante la compressione di un'ogiva tagliente che va ad aggrapparsi al tubo stesso. I raccordi a compressione sono adatti negli assemblaggi di tubi rigidi (rame, ottone, ecc.); per eventuali utilizzi di tubi "plastici" è necessario utilizzare un apposito rinforzo (cod. D414) che va inserito all'interno del tubo fino all'apposita battuta di appoggio. Tutti i raccordi appartenenti a questa categoria sono stati progettati seguendo le norme DIN che regolamentano il prodotto.

ORDERING CODE / CODIFICATIONS / CHIAVE DI CODIFICA

D 4 0 0 6 1/8

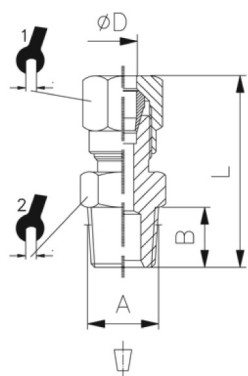


TECHNICAL DATA / DONNÉES TECHNIQUES / DATI TECNICI

Fields of application / Domaine d'application / Campi di impiego	Pneumatic and hydraulic systems Circuits pneumatiques et hydrauliques Circuiti pneumatici e idraulici
Temperature range / Température d'utilisation / Temperatura di esercizio	-20°C / +80°C
Max operating pressure / Pression d'utilisation max. / Pressione massima	60 bar
Material / Matière / Materiale	Brass / Laiton / Ottone UNI EN 12164 CW 614N Brass / Laiton / Ottone UNI EN 12165 CW 617N
Surface used / Traitement de surface / Trattamento superficiale	Nickel-plating / Nickelage / Nichelatura
Recommended tubes / Tubes recommandés / Tubi raccomandati	For metal pipes (copper, brass, steel, aluminium etc.) Tubes métalliques (cuivre, laiton, acier, aluminium etc.) Tubi metallici (rame, ottone, acciaio, alluminio ecc.)

D401

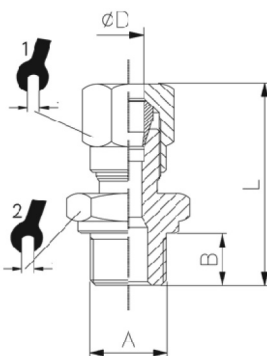
STRAIGHT MALE ADAPTOR TAPER / **DROIT MÂLE CONIQUE** / DIRITTO MASCHIO CONICO



CODE	ØD	A	B	L	1	2	min.pcs.
D401 4-1/8	4,0	R1/8	8,0	27,0	10	10	10
D401 6-1/8	6,0	R1/8	8,0	28,0	12	12	10
D401 6-1/4	6,0	R1/4	11,0	32,5	12	14	10
D401 8-1/8	8,0	R1/8	8,0	29,5	14	12	10
D401 8-1/4	8,0	R1/4	11,0	33,0	14	14	10
D401 8-3/8	8,0	R3/8	11,5	33,0	14	17	10
D401 10-1/4	10,0	R1/4	11,0	37,5	19	17	10
D401 10-3/8	10,0	R3/8	11,5	38,0	19	17	10
D401 10-1/2	10,0	R1/2	14,0	40,5	19	22	10
D401 12-3/8	12,0	R3/8	11,5	39,0	22	19	10
D401 12-1/2	12,0	R1/2	14,0	41,0	22	22	10
D401 14-1/2	14,0	R1/2	14,0	42,5	27	22	10
D401 15-1/2	15,0	R1/2	14,0	42,5	27	22	10
D401 16-1/2	16,0	R1/2	14,0	42,0	30	24	10
D401 18-1/2	18,0	R1/2	14,0	43,0	32	26	10

D402

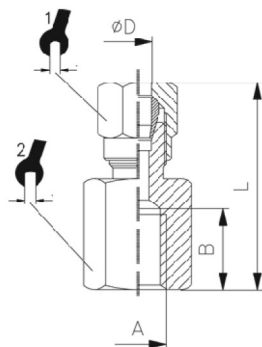
STRAIGHT MALE ADAPTOR PARALLEL / **DROIT MÂLE CYLINDRIQUE** / DIRITTO MASCHIO CILINDRICO



CODE	ØD	A	B	L	1	2	min.pcs.
D402 4-1/8	4,0	G1/8	6,0	25,0	10	14	10
D402 6-1/8	6,0	G1/8	6,0	26,0	12	14	10
D402 6-1/4	6,0	G1/4	8,0	29,5	12	17	10
D402 8-1/8	8,0	G1/8	6,0	27,5	14	14	10
D402 8-1/4	8,0	G1/4	8,0	30,0	14	17	10
D402 8-3/8	8,0	G3/8	9,0	30,5	14	19	10
D402 10-1/4	10,0	G1/4	8,0	34,5	19	17	10
D402 10-3/8	10,0	G3/8	9,0	36,0	19	19	10

D403

STRAIGHT FEMALE ADAPTOR / **DROIT FEMELLE** / DIRITTO FEMMINA

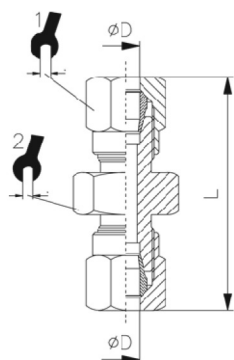


CODE	ØD	A	B	L	1	2	min.pcs.
D403 4-1/8	4	G1/8	8,0	24,5	10	14	10
D403 6-1/8	6	G1/8	8,0	26,0	12	14	10
D403 6-1/4	6	G1/4	11,0	30,5	12	17	10
D403 8-1/8	8	G1/8	8,0	26,5	14	14	10
D403 8-1/4	8	G1/4	11,0	31,0	14	17	10
D403 8-3/8	8	G3/8	11,5	31,0	14	20	10
D403 10-1/4	10	G1/4	11,0	35,5	19	17	10
D403 10-3/8	10	G3/8	11,5	36,5	19	20	10
D403 12-3/8	12	G3/8	11,5	37,0	22	20	10
D403 12-1/2	12	G1/2	15,0	38,5	22	24	10
D403 14-1/2	14	G1/2	15,0	40,0	27	24	10
D403 15-1/2	15	G1/2	15,0	40,5	27	24	10
D403 16-1/2	16	G1/2	15,0	41,5	30	24	10
D403 18-1/2	18	G1/2	15,0	43,0	32	24	10

D404



UNION CONNECTOR / **DROIT DOUBLE** / DIRITTO INTERMEDIO

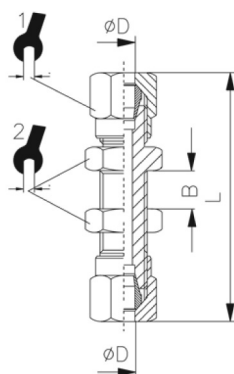


CODE	ØD	L	1	2	min.pcs.
D404 4	4,0	33,5	10	10	10
D404 6	6,0	36,5	12	12	10
D404 8	8,0	38,5	14	14	10
D404 10	10,0	47,5	19	17	10
D404 12	12,0	50,5	22	19	10
D404 14	14,0	55,5	27	24	10
D404 15	15,0	55,5	27	24	10
D404 16	16,0	58,0	30	24	10
D404 18	18,0	60,0	32	26	10

D416



BULKHEAD CONNECTOR / **TRAVERSÉE DE CLOISON** / DIRITTO INTERMEDIO PASSALAMIERA

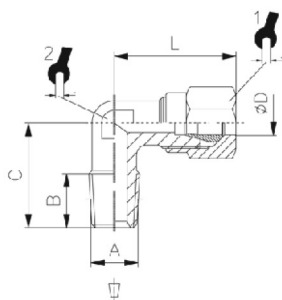


CODE	ØD	Bmax	L	1	2	min.pcs.
D416 6	6,0	15,5	51,5	12	14	10
D416 8	8,0	16,5	55,5	14	16	10
D416 10	10,0	15,5	62,5	19	19	10
D416 12	12,0	16,0	64,5	22	22	10
D416 14	14,0	18,0	69,5	27	25	10
D416 15	15,0	18,0	69,5	27	25	10

D405



MALE ELBOW TAPER / **ÉQUERRE MALE CONIQUE** / L MASCHIO CONICO

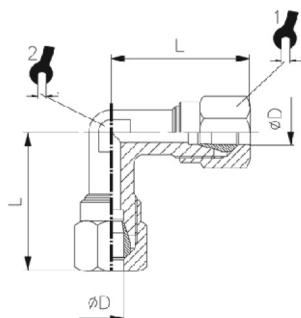


CODE	ØD	A	B	C	L	1	2	min.pcs.
D405 4-1/8	4	R1/8	8,0	16,0	21,0	10	9	10
D405 6-1/8	6	R1/8	8,0	16,0	22,0	12	9	10
D405 6-1/4	6	R1/4	11,0	20,0	24,5	12	11	10
D405 8-1/8	8	R1/8	8,0	17,0	24,0	14	11	10
D405 8-1/4	8	R1/4	11,0	20,0	24,0	14	11	10
D405 8-3/8	8	R3/8	11,5	24,0	27,0	14	13	10
D405 10-1/4	10	R1/4	11,0	23,5	32,0	19	13	10
D405 10-3/8	10	R3/8	11,5	24,0	32,0	19	13	10
D405 10-1/2	10	R1/2	14,0	28,5	34,0	19	15	10
D405 12-3/8	12	R3/8	11,5	25,5	34,5	22	15	10
D405 12-1/2	12	R1/2	14,0	28,5	34,5	22	15	10
D405 14-1/2	14	R1/2	14,0	30,0	38,0	27	17	10
D405 15-1/2	15	R1/2	14,0	30,0	38,0	27	17	10
D405 16-1/2	16	R1/2	14,0	31,5	39,5	30	19	10
D405 18-1/2	18	R1/2	14,0	34,0	44,0	32	22	10

D407



UNION ELBOW / ÉQUERRE DOUBLE / L INTERMEDIO

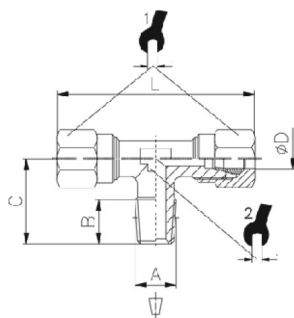


CODE	ØD	L	⌘	⌘	min.pcs.
D407 4	4,0	21,0	10	9	10
D407 6	6,0	23,0	12	9	10
D407 8	8,0	24,0	14	11	10
D407 10	10,0	32,0	19	13	10
D407 12	12,0	34,5	22	15	10
D407 14	14,0	38,0	27	17	10
D407 15	15,0	38,0	27	17	10
D407 16	16,0	39,5	30	19	10
D407 18	18,0	44,0	32	22	10

D409



MALE TEE / T MALE CENTRAL / T MASCHIO CENTRALE

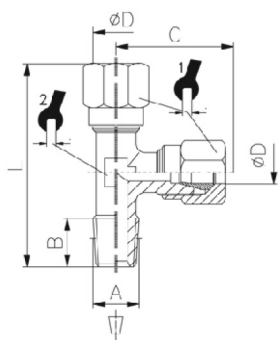


CODE	ØD	A	B	C	L	⌘	⌘	min.pcs.
D409 4-1/8	4,0	R1/8	8,0	16,0	42,0	10	9	10
D409 6-1/8	6,0	R1/8	8,0	16,0	46,0	12	9	10
D409 6-1/4	6,0	R1/4	11,0	20,0	48,0	12	11	10
D409 8-1/8	8,0	R1/8	8,0	17,0	48,0	14	11	10
D409 8-1/4	8,0	R1/4	11,0	20,0	48,0	14	11	10
D409 8-3/8	8,0	R3/8	11,5	24,0	54,0	14	13	10
D409 10-1/4	10,0	R1/4	11,0	23,5	64,0	19	13	10
D409 10-3/8	10,0	R3/8	11,5	24,0	64,0	19	13	10
D409 12-3/8	12,0	R3/8	11,5	25,5	69,0	22	15	10
D409 12-1/2	12,0	R1/2	14,0	28,5	69,0	22	15	10
D409 14-1/2	14,0	R1/2	14,0	30,0	76,0	27	17	10
D409 15-1/2	15,0	R1/2	14,0	30,0	76,0	27	17	10
D409 16-1/2	16,0	R1/2	14,0	31,5	79,0	30	19	10
D409 18-1/2	18,0	R1/2	14,0	34,0	88,0	32	22	10

D410



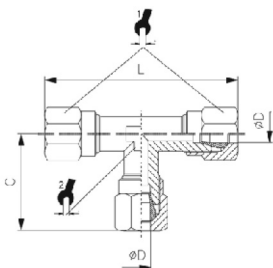
LATERAL MALE TEE / T MALE LATÉRAL / T LATÉRALE



CODE	ØD	A	B	C	L	⌘	⌘	min.pcs.
D410 4-1/8	4,0	R1/8	8,0	21,0	37,0	10	9	10
D410 6-1/8	6,0	R1/8	8,0	23,0	39,0	10	9	10
D410 6-1/4	6,0	R1/4	11,0	24,5	44,5	12	11	10
D410 8-1/8	8,0	R1/8	8,0	24,0	41,0	14	11	10
D410 8-1/4	8,0	R1/4	11,0	24,0	44,0	14	11	10
D410 8-3/8	8,0	R3/8	11,5	27,0	51,0	14	13	10
D410 10-1/4	10,0	R1/4	11,0	32,0	55,5	19	13	10
D410 10-3/8	10,0	R3/8	11,5	32,0	56,0	19	13	10
D410 12-3/8	12,0	R3/8	11,5	34,5	60,0	22	15	10
D410 12-1/2	12,0	R1/2	14,0	34,5	63,0	22	15	10
D410 14-1/2	14,0	R1/2	14,0	38,0	68,0	27	17	10
D410 15-1/2	15,0	R1/2	14,0	38,0	68,0	27	17	10
D410 16-1/2	16,0	R1/2	14,0	39,5	71,0	30	19	10
D410 18-1/2	18,0	R1/2	14,0	44,0	78,0	32	22	10

D408

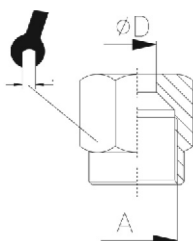
UNION TEE / T / T INTERMEDIO



CODE	ØD	C	L			min.pcs.
D408 4	4,0	21,0	42,0	10	9	10
D408 6	6,0	23,0	46,0	12	9	10
D408 8	8,0	24,0	48,0	14	11	10
D408 10	10,0	32,0	64,0	19	13	10
D408 12	12,0	34,5	69,0	22	15	10
D408 14	14,0	38,0	76,0	27	17	10
D408 15	15,0	38,0	76,0	27	17	10
D408 16	16,0	39,5	79,0	30	19	10
D408 18	18,0	44,0	88,0	32	22	10

D411

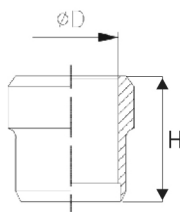
NUT / ECROU / DADO



CODE	ØD	A		min.pcs.
D411 4	4,0	M8x1	10	10
D411 6	6,0	M10x1	12	10
D411 8	8,0	M12x1	14	10
D411 10	10,0	M16x1,5	19	10
D411 12	12,0	M18x1,5	22	10
D411 14	14,0	M22x1,5	27	10
D411 15	15,0	M22x1,5	27	10
D411 16	16,0	M24x1,5	30	10
D411 18	18,0	M26x1,5	32	10

D412

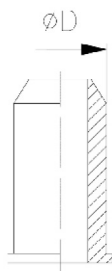
CONE / OLIVE / CONO



CODE	ØD	H	min.pcs.
D412 4	4,0	6,0	10
D412 6	6,0	7,0	10
D412 8	8,0	7,0	10
D412 10	10,0	10,0	10
D412 12	12,0	10,0	10
D412 14	14,0	10,0	10
D412 15	15,0	10,0	10
D412 16	16,0	10,0	10
D412 18	18,0	10,5	10

D414

INTERNAL SUPPORT / FOURRURE / ANIMA DI RINFORZO



CODE	ØD1	ØD2	H	min.pcs.
D414 4	2,5	3,5	10,0	10
D414 6	4,0	5,5	12,0	10
D414 8	6,0	7,5	13,0	10
D414 9	6,0	7,5	13,0	10
D414 10	8,0	9,5	14,0	10
D414 12	10,0	11,5	16,0	10
D414 14	12,0	13,5	16,0	10
D414 15	12,5	14,5	17,0	10
D414 16	14,0	15,5	18,0	10