



The selector valve can control two different inputs, choosing one or the other, but using only one way out.

Le sélecteur de circuit peut contrôler deux entrées différentes, en choisissant l'une ou l'autre, mais en utilisant l'une en sortie.

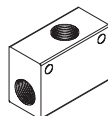
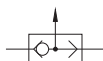
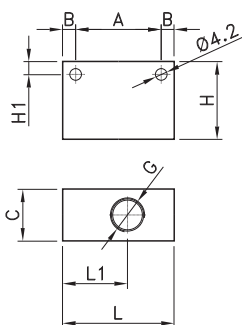
La valvola selettoria ha il compito di comandare due diversi ingressi selezionando uno o l'altro ma di utilizzare una sola uscita.

TECHNICAL DATA / **DONNÉES TECHNIQUES** / **DATI TECNICI**

| | |
|----------------------------------------------------------------------------------------|--------------------------------------------------------------------------------------------------------|
| Fluid / Fluide / <i>Fluido</i> | Lubricated or non lubricated air / Air lubrifié ou non / <i>Aria con o senza lubrificazione</i> |
| Pressure range / Pression d'utilisation / <i>Pressione di esercizio</i> | 2 - 10bar |
| Temperature range / Température d'utilisation / <i>Temperatura di esercizio</i> | -10°C / +60°C |
| Nominal flow rate at 6 bar / Débit à 6 bar / <i>Portata a 6 bar</i> | 1/8=400 NI/min · 1/4=1300 NI/min |

COMPONENTS / **COMPOSANTS** / **COMPONENTI**

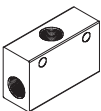
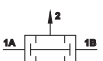
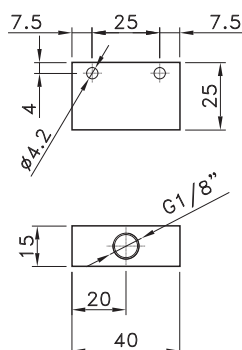
| | |
|---------------------------------------------------------------|-----------------------------------------------------------------------------|
| Body / Corps / <i>Corpo</i> | Aluminium anodized / Aluminium anodisé / <i>Alluminio anodizzato</i> |
| Internal parts / Partie interne / <i>Parti interne</i> | Brass / Laiton / <i>Ottone</i> |
| Seals / Joints / <i>Guarnizioni</i> | NBR |



OR

| | |
|---------------|-----|
| CODE | |
| VS0101 | 1/8 |
| VS0201 | 1/4 |

| G | A | B | C | H | H1 | L | L1 |
|-------------|----|-----|----|----|-----|------|------|
| G1/8 | 20 | 4.5 | 15 | 25 | 4.5 | 34.8 | 14.5 |
| G1/4 | 33 | 5 | 20 | 30 | 5 | 43 | 25 |



AND

| | |
|-------------|--|
| CODE | |
| VL22 | |